

Colorado State Fleet Management
2018 VEHICLE SPECIFICATIONS

Dealers Invitation to Bid

8/25/2017

ORIGINAL

Class: Large Van

Body Code: D3

PASS VAN 12-PASSENGER

Representative Models: 1: FORD
3: RAM

T350 VAN
PROMASTER 3500 VAN

2: CHEVROLET G3500 VAN
4: NISSAN NV3500

MAKE: CHEVY MODEL: EXPRESS OEM MODEL #: CG33406 TRIM LEVEL: LS OEM CODE: _____

STANDARD SPECIFICATIONS:

OEM CODE INDICATE ACTUAL DEALER SPECIFICATIONS

107	PASS: 12 PERSONS MIN.	ZX5
113	SLIDING, RIGHT-SIDE DOOR	YA2
115	TWO, SWING-OUT, REAR DOORS	STANDARD
140	TIRES: ALL SEAS M&S RADIAL	STANDARD
146	FULL SIZE SPARE TIRE	STANDARD
160	WINDOWS ALL AROUND (VAN)	STANDARD
179	WHEELBASE: 125.0 IN. MIN	135"
196	ENG MIN CYL: 6	LV1 6CYL
237	GVW RATING: 8800 MIN	9600
298	CRUISE CONTROL/TILT	STANDARD
300	AIR CONDITIONING - R134a	STANDARD
302	RADIO: AM/FM	STANDARD
305	AUXILIARY AIR CONDITIONING	STANDARD
307	POWER BRAKES & POWER STEERING	STANDARD
308	ABS BRAKES	STANDARD
310	SEATS: CLOTH SEATS	STANDARD
327	FLOORING: FRONT & REAR RUBBER	STANDARD
340	AIR BAG - DRIVER SIDE	STANDARD
350	STD ENG: SPECIFY	LV1 4.3 V6
400	MIRRORS: RIGHT AND LEFT	STANDARD
404	INTERMITTENT WIPERS	STANDARD
410	TRANSMISSION: AUTOMATIC	STANDARD
414	TWO-WHEEL DRIVE: REAR	STANDARD
752	AXLE RATIO: SPECIFY	GU6 3.42
863	BACKUP CAMERA	STANDARD
910	PRIMARY FUEL: UNLEADED	STANDARD
991	STD WRNTY - BUMPER TO BUMPER 3/36	STANDARD

STANDARD VEHICLE BASE PRICE \$ 25,906

AVAILABLE OPTIONS:

OEM CODE ACTUAL / COMMENTS

PRICE

114	DOUBLE SWING SIDE DOOR	E24	NO CHARGE
-----	------------------------	-----	-----------

Colorado State Fleet Management
2018 VEHICLE SPECIFICATIONS

Dealers Invitation to Bid

8/25/2017

Class: Large Van

Body Code: D3

PASS VAN 12-PASSENGER

Representative Models: 1: FORD
3: RAM

T350 VAN
PROMASTER 3500 VAN

2: CHEVROLET G3500 VAN
4: NISSAN NV3500

MAKE: CHEVY MODEL: EXPRESS OEM MODEL #: CG33406 TRIM LEVEL: LS OEM CODE: _____

AVAILABLE OPTIONS:	OEM CODEACTUAL / COMMENTS	PRICE
126 EXTENDED BODY	CG33706	1869
133 BACK UP ALARM	AFTERMARKET	138
143 TIRES: OPTION #1, LIST SIZE:	NOT AVAILABLE	
216 NON-STD ENGINE OPTION A:	L96 6.0 V8	995
217 ENG OPTION: DIESEL	LWN 2.8 TURBO DIESEL	3715
239 GVW OPTION: SPECIFY	NOT AVAILABLE	
249 AXLE RATIO OPTION: SPECIFY	NOT AVAILABLE	
252 CNG PREP PACKAGE	LC8 6.0 GASEOUS CNG/LPG	1295
254 ALT FUEL - OEM BI FUEL SPECIFY TANK LOC	NOT AVAILABLE	
255 ALT FUEL - OEM DEDICATED SPEC TANK LOC	POWER SOLUTIONS OEM SEE NOTES PAGE 4	13255
258 E85 - OEM BI FUEL	REQUIRES 216	
281 DUAL REAR WHEELS	AFTERMARKET QUIGLEY	7170
262 DARKEST LEGAL TINT AVAIL	STANDARD	
284 REMOTE KEYLESS ENTRY	ATG	170
306 AUXILIARY HEATING	STANDARD	
311 SEATS: VINYL SEATS	AR7	NO CHARGE
320 FLOORING: CARPET	B30	185
330 SECURITY CAGE:LIST DESIGN/LOCA	AFTERMARKET	785
403 REAR WINDOW DEFROSTER	C49	155
408 REAR AXLE - ANTI SPIN	G80	325
415 FOUR-WHEEL DRIVE	AFTERMARKET QUIGLEY	12370
429 TRAILER BRAKE CONTROL-ELECTRIC	AFTERMARKET	230
430 PCKG:TOWING/R/CVR HITCH(Alchml)	Z82	280
438 HEAVY DUTY COOLING	STANDARD	
443 PKG: STROBE LIGHT (Attachment)		280
454 AUXILARY BATTERY	T92 770 CCA+600 CCA \$165 UA 1770 CCA \$60	
472 EPACT AFV CREDIT: Specify	NOT AVAILABLE	
520 POWER LOCKS	STANDARD	
523 DISABLE ALL REAR DOOR LOCKS	DEALER	320
526 POWER MIRRORS	DE5 REQUIRES 530	115
530 POWER WINDOWS	R8J	100
541 DELETE DAYTIME/AUTO HEADLIGHTS	DEALER	230
599 AM/FM CD PLAYER	US8 V18 FACTORY NAVIGATION \$1025	150
608 HYBRID GAS/ELECTRIC	NOT AVAILABLE	
620 UPPER TRIM LEVEL PKG: SPECIFY	LT	1430

Colorado State Fleet Management
2018 VEHICLE SPECIFICATIONS

Dealers invitation to Bid

8/25/2017

Class: Large Van

Body Code: Q3

PASS VAN 12-PASSENGER

Representative Models: 1: FORD
3: RAM

T350 VAN
PROMASTER 3500 VAN

2: CHEVROLET G3500 VAN
4: NISSAN NV3500

MAKE: CHEVY MODEL: EXPRESS OEM MODEL #: CG33406 TRIM LEVEL: LS OEM CODE: _____

AVAILABLE OPTIONS:	OEM CODE	ACTUAL / COMMENTS	PRICE
833 HD CHARGING SYSTEM	KW5	220 AMP	150
643 ADD DAYTIME RUNNING LIGHTS		STANDARD	
858 EXTRA KEYS & REMOTES		REMOTE \$85 KEY \$41	
763 PHEV (PLUG IN HYBRID ELEC VEH)		NOT AVAILABLE	
845 BLIND SPOT NOTIFICATION	UFT		2315
854 MEDIUM ROOF			3400
855 HIGH ROOF			3600
887 BEV (BATTER/ELECTRIC)		NOT AVAILABLE	
982 EXT WARRANTY - POWER TRAIN 5/100,000	STANDARD		INCLUDED AT NO CHARGE

Colorado State Fleet Management
2018 VEHICLE SPECIFICATIONS

Dealers Invitation to Bid

8/25/2017

Class: Large Van

Body Code: D3

PASS VAN 12-PASSENGER

Representative Models: 1: FORD
3: RAM

T350 VAN
PROMASTER 3500 VAN

2: CHEVROLET G3500 VAN
4: NISSAN NV3500

MAKE: CHEVY MODEL: EXPRESS OEM MODEL #: CG33406 TRIM LEVEL: LS OEM CODE: _____

AVAILABLE COLORS: Please attach manufacturer color chart

OTHER VEHICLE SPECIFICATIONS / OPTIONS (Please attach separate sheet if necessary) PRICE
255 - TANK LOCATION AFT AXLE & MIDSHIP SEE BROCHURE FOR DETAILS INCLUDES 252

STANDARD FACTORY WARRANTY (Attach detailed description):

	MILES	MONTHS
Bumper to Bumper	<u>36K</u>	<u>36</u>
Drive Train	<u>100K</u>	<u>60</u>
Other	_____	_____

OPTIONAL FACTORY WARRANTY (Attach detailed description):

	MILES	MONTHS	PRICE
<u>SEVERAL AVAILABLE CALL FOR DETAILS</u>	_____	_____	_____

EPA FUEL RATING: _____ M.P.G CITY, _____ M.P.G HIGHWAY

OEM MINIMUM FUEL RATED OCTANE: 85

DELIVERY: APPROX 60 DAYS FROM DEALER RECEIPT OF ORDER FROM STATE (E.G. 90 DAYS)

IDENTIFY ANY EXCEPTIONS TO SPECIFICATIONS:

DEALER NAME: JOHN ELWAY CHEVROLET

BIDDER'S NAME: MARK MCMUNN

DEALER PHONE: 720.284.5255

SIGNATURE: 

PROANE

Vehicle Description	Engine	Trim Location	GGE	GVW
3500HD Truck 2WD & 4WD	6.0 L	Back of Cab	36	10,001 - 14,000
G3500 Express Cutaway	6.0 L	Alt Axle & Midship	62	10,001 - 14,000
G4500 Express C. Cutaway	6.0 L	Alt Axle & Midship	62	14,000 - 23,000
2500HD Truck 2WD & 4WD	6.0 L	Back of Cab	36	8501 - 10,000
3500 Low Cab Forward	6.0 L	Multiple Configurations Available		
4500 Low Cab Forward	6.0 L	Multiple Configurations Available		

NATURAL GAS

Vehicle Description	Engine	Trim Location	GGE	GVW
G2000 Passenger Van	6.0 L	Alt Axle & Midship	16	8501 - 10,000
G3500 Passenger Van	6.0 L	Alt Axle & Midship	16	10,001 - 14,000
3500HD Truck 2WD & 4WD	6.0 L	Back of Cab	21	10,001 - 14,000
G3500 Express Cutaway	6.0 L	Alt Axle & Midship	16	10,001 - 14,000
G4500 Express Cutaway	6.0 L	Alt Axle & Midship	16	14,000 - 33,000
3500 Cab Chassis 2WD & 4WD	6.0 L	Back of Cab	21	10,001 - 14,000
2500HD Truck 2WD & 4WD	6.0 L	Back of Cab	21	8501 - 10,000
G2500 Cargo Van	6.0 L	Alt Axle & Midship	16	8501 - 10,000
G3500 Cargo Van	6.0 L	Alt Axle & Midship	16	8501 - 10,000
3500 Low Cab Forward	6.0 L	Multiple Configurations Available		
4500 Low Cab Forward	6.0 L	Multiple Configurations Available		

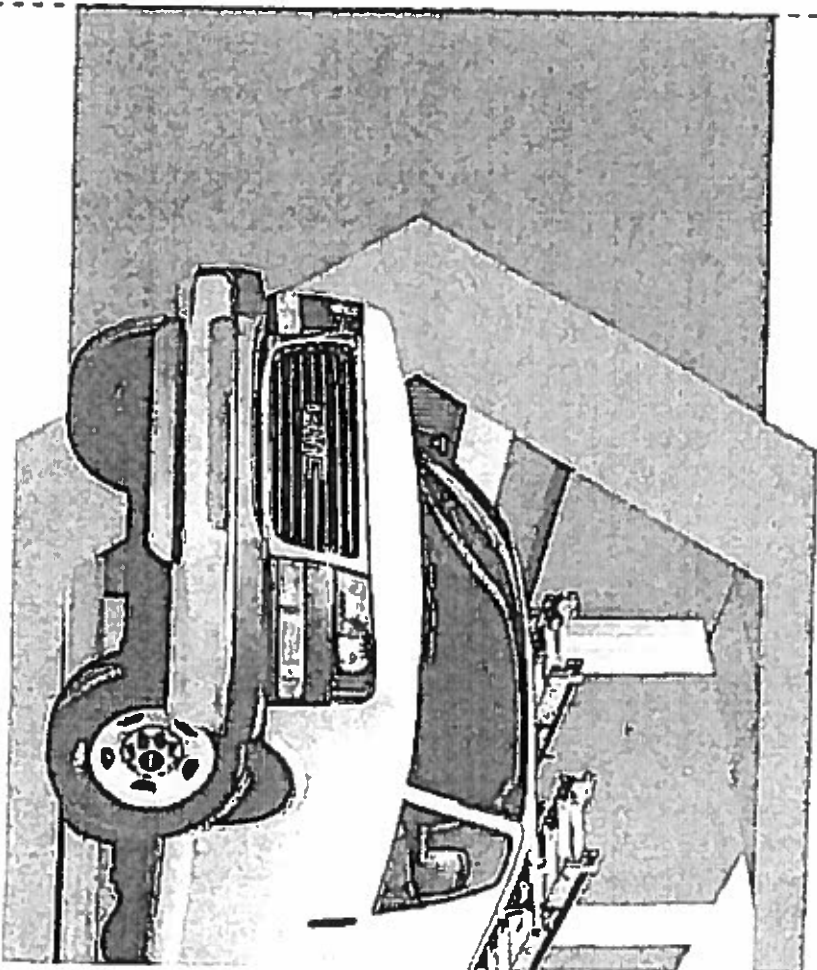


POWER SOLUTIONS
INTERNATIONAL

201 Mittel Drive, Wood Dale, IL 60191
630.350.9400 www.psiengines.com



POWER SOLUTIONS
INTERNATIONAL



PSI-GM SPECIALTY VEHICLE
MODIFIER (SVMD)

CURRENT GM APPLICATIONS



SILVERADO & SIERRA
2500/3500 HD PICKUPS



EXPRESS & SAVANA
2500/3500 VANS
3500/4500 CUTAWAYS

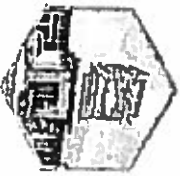


LOW CAB FORWARD
3500/4500 HD TRUCKS



HOW IT WORKS

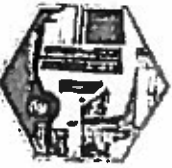
- PSI performs alternative fuel conversions including natural gas and propane on a range of GM vehicles.
- GM customers can seamlessly order and take delivery from any GM dealerships.
- GM will supply vehicles equipped with specialized version 6.0L V-8 engine to PSI, which in turn will provide the fuel system and integration hardware.
- All PSI Alternative fuel conversions are covered by PSI's 3-year/36,000-mile warranty in addition to Chevrolet and GMC's five-year/60,000-mile limited powertrain warranty a considerable value that no other aftermarket provider can offer.



GM DEALERS



FLEETS



BODY BUILDERS



OEMS

A NEW GENERATION FOR PROPANE

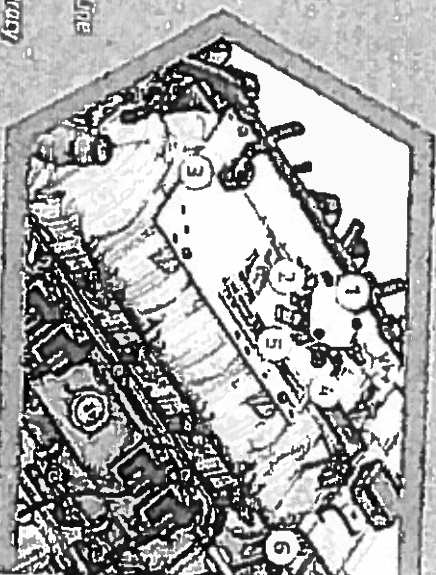
Bi-Phase Gen II maintains the heat resisting benefits of coaxial fuel lines up near the engine where it is hottest, while utilizing simpler and more common materials and components in the vehicle length fuel lines and in the LP tank.

Bi-Phase Gen II has the unique and effective Bi-Phase Liquid LP injector and fuel rails.

- MORE ECONOMICAL
- SIMPLIFIED INTEGRATION
- HIGHER RELIABILITY

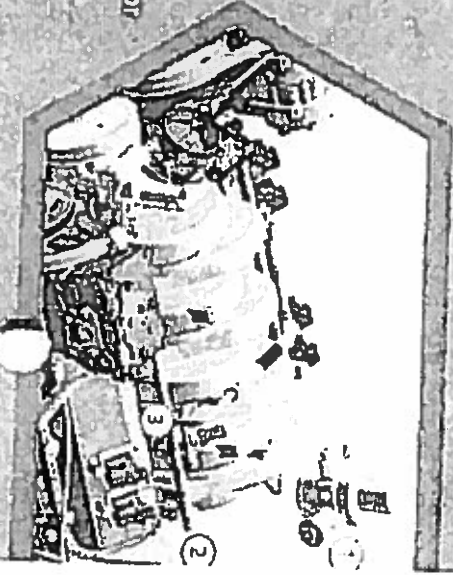
PROPANE

1. Fuel Distribution Block
Configurable for Many Engines
2. Pressure Test Port
Easily Accessible for Tech
3. Coaxial Fuel Pipe
Supplies Fuel to Injectors & Returns Fuel to Tank
4. Supply and Return Ports
Easily Accessible for Assembly Line
5. Fuel Pressure/Temp Sensor
Engine Mounted for Better Accuracy
6. Fuel Rail Assembly
Configurable for Many Engines



NATURAL GAS

1. Fuel Pressure Regulator
6 Bar Self-Purge
2. Fuel Rail Assembly
Configurable for Many Engines
3. Bosch NG12-GP GDI Injector
Proven Fuel Mixture Control



**Colorado State Purchasing Office (per SFM)
LIST AND EXPLANATIONS OF VEHICLE PACKAGES
FOR THE 2018 MODEL YEAR FLEET VEHICLE PROPOSALS**

Page 4 of 52

#430 - PACKAGE: OEM TOWING OPTION

Attach one copy of this form to each body code specification sheet that has an Available Option #430 including the following body codes:

**C2, C3, C4, D1, D2, D3, D5, D8, E2, E3, E4, E8, F2, F3, F4, F8, K1, K2, K3, K5, K6, T1, T4,
T5**

An installed **OEM TOWING OPTION PACKAGE** should include the following:

- Frame mounted receiver hitch with a class 3 (class 4 for T1, T4, T5) rating that accepts a 2" square receiver
 - Heavy duty engine cooling
 - Transmission cooling (automatic only)
 - Trailer wiring harness
 - HD turn signal flasher
 - Handling package (describe: _____)
-
- HD battery and Alternator.
 - Price to include complete installation.
 - All items to be covered at a minimum by the 3 year 36,000 mile factory warranty

Please list additions and/or deletions to your company's OEM TOWING OPTION package from the above listed specs:

Total Price for OEM TOWING PACKAGE:

\$

280

For Body
Code:

D3

Total Price for T1 - OEM TOWING
PACKAGE:

\$

Colorado State Purchasing Office (per SFM)
LIST AND EXPLANATIONS OF VEHICLE PACKAGES
FOR THE 2018 MODEL YEAR FLEET VEHICLE PROPOSALS

#443 - STROBE LIGHT

Attach one copy of this form to each body code specification sheet that has an Available Option #443 including the following body codes:

All C's, D's, E's, F's, G's, H's & K's, P4, PE

The **STROBE LIGHT PACKAGE** must include the following:

- Roof mount of strobe on truck, van or sport utility vehicle
- Dual flash strobe with amber shield
- Class 2 light, SAE spec: J1318 or DFS750-A North American Signal spec or equivalent.
- Minimum: 15 joules
- Minimum of 60 double flashes per minute
- **Base must be aluminum, not plastic.**
- Switch in cab
- Height: between 3 1/2 inches to 6 inches, measured to top of light housing
- Warranty: 1-year parts and labor
- Complete installation with locations as follows:
- **Location for strobe light on pickups:**
- On the roof of the pickup cab
- The light must be centered between the front of the roof and the rear of the roof.
- The light must be also centered from one side to the other side of the roof.
- **Location for strobe light on vans and sport utilities:**
- On the roof of the van or sport utility
- The light must be centered from one side to the other side of the roof
- The light must also be two feet from the rear of the roof.

List the make and model of strobe that is bid:

Make CODE 3 Model LSS222CA

List any additions and/or deletions of your bid from the STROBE LIGHT PACKAGE specs listed above:

Total Price for STROBE LIGHT PACKAGE:

\$

280

**Colorado State Purchasing Office (per SFM)
LIST AND EXPLANATIONS OF VEHICLE PACKAGES
FOR THE 2018 MODEL YEAR FLEET VEHICLE PROPOSALS**

Page 8 of 52

For Body
Code:

D3